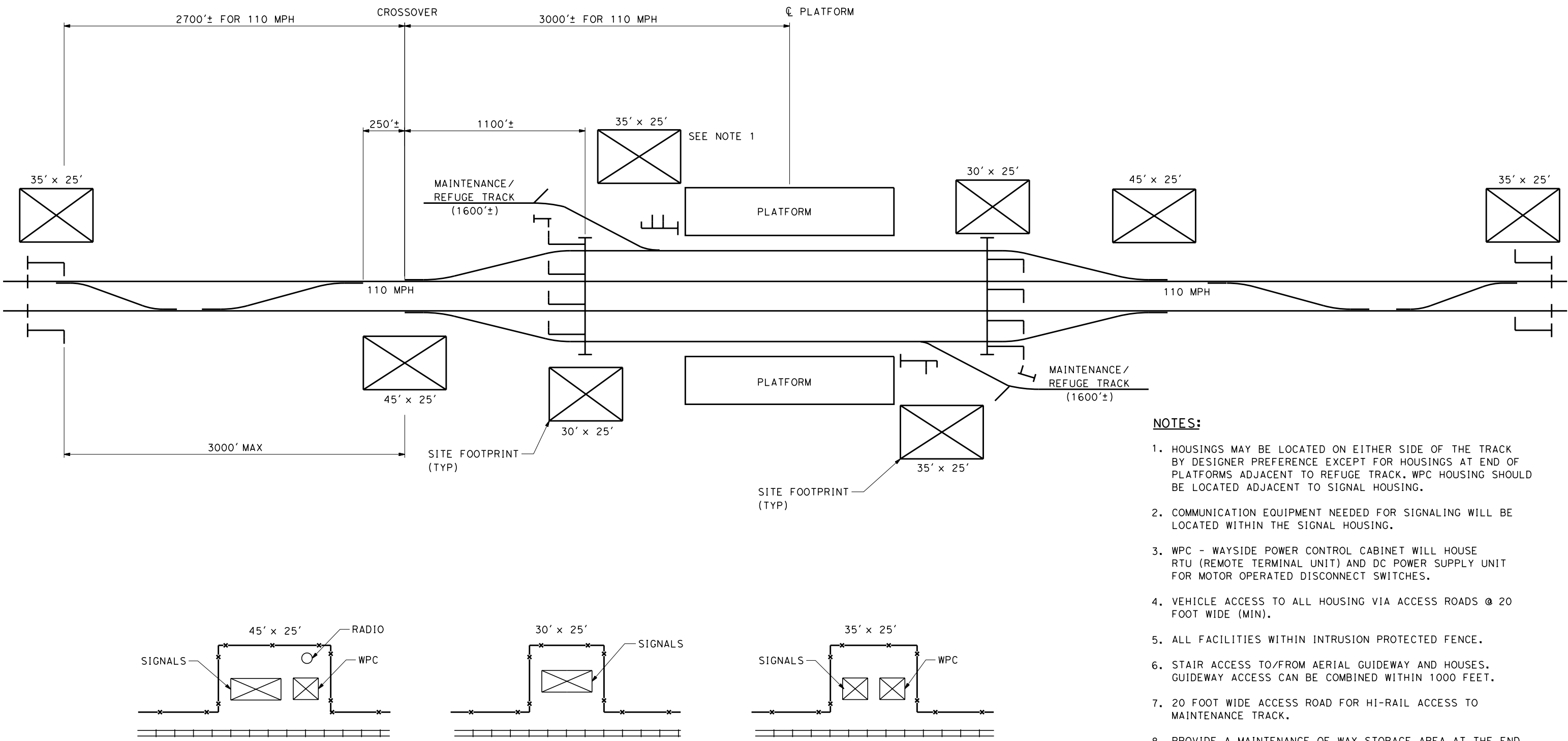
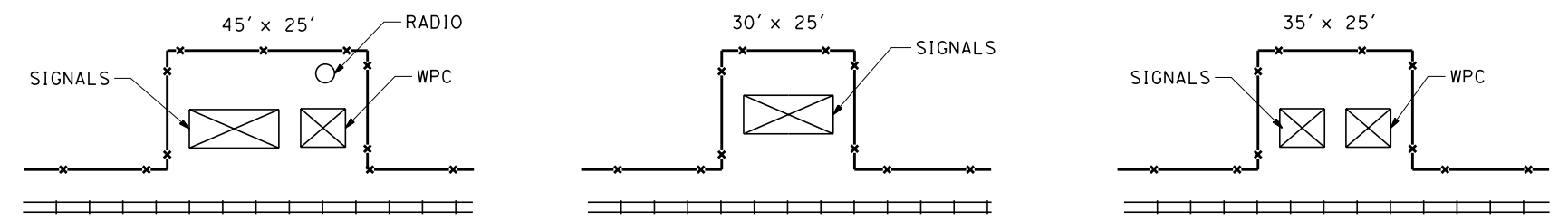


3/1/2010 1:31:32 PM T:\13259B Calif High Speed Rail\CADD\Directive Drawings\2.1.3 - Turnouts\working\2.1.3 - INTERLOCK\_A.dgn



**NOTES:**

1. HOUSINGS MAY BE LOCATED ON EITHER SIDE OF THE TRACK BY DESIGNER PREFERENCE EXCEPT FOR HOUSINGS AT END OF PLATFORMS ADJACENT TO REFUGE TRACK. WPC HOUSING SHOULD BE LOCATED ADJACENT TO SIGNAL HOUSING.
2. COMMUNICATION EQUIPMENT NEEDED FOR SIGNALING WILL BE LOCATED WITHIN THE SIGNAL HOUSING.
3. WPC - WAYSIDE POWER CONTROL CABINET WILL HOUSE RTU (REMOTE TERMINAL UNIT) AND DC POWER SUPPLY UNIT FOR MOTOR OPERATED DISCONNECT SWITCHES.
4. VEHICLE ACCESS TO ALL HOUSING VIA ACCESS ROADS @ 20 FOOT WIDE (MIN).
5. ALL FACILITIES WITHIN INTRUSION PROTECTED FENCE.
6. STAIR ACCESS TO/FROM AERIAL GUIDEWAY AND HOUSES. GUIDEWAY ACCESS CAN BE COMBINED WITHIN 1000 FEET.
7. 20 FOOT WIDE ACCESS ROAD FOR HI-RAIL ACCESS TO MAINTENANCE TRACK.
8. PROVIDE A MAINTENANCE OF WAY STORAGE AREA AT THE END OF THE REFUGE TRACK. STORAGE AREA TO BE APPROXIMATELY 70 FEET X 250 FEET WITH PERIMETER FENCING AND 20-FOOT-WIDE GATED OPENINGS AT BOTH ENDS.



**HOUSING WITHIN SITES**

REV	DATE	BY	CHK	APP	DESCRIPTION

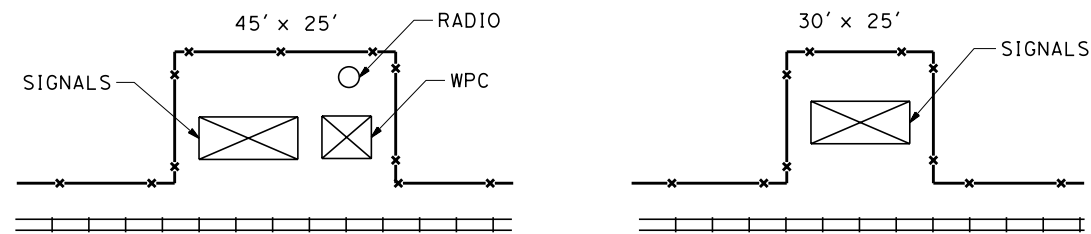
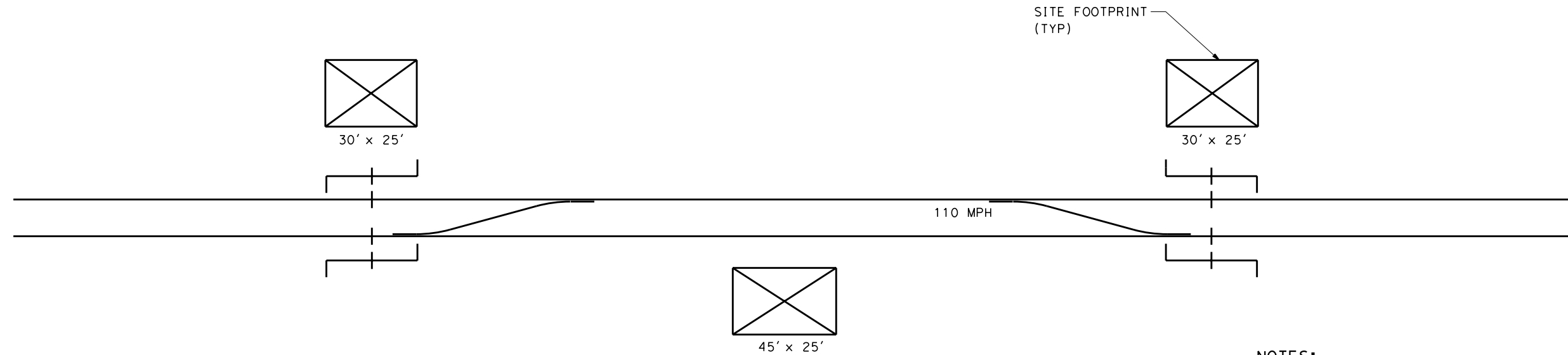
DESIGNED BY  
H. GLICKENSTEIN  
DRAWN BY  
D. SOLTERO  
CHECKED BY  
R. SCHEDES  
IN CHARGE  
K. JONG  
DATE  
02-25-10



**CALIFORNIA HIGH-SPEED TRAIN PROJECT**  
TYPICAL INTERLOCKING SCHEMATIC AT STATIONS  
ELEMENTS IN SITE FOOTPRINT

CONTRACT NO.
DRAWING NO. TM 2.1.3-INTERLOCK A
SCALE NO SCALE
SHEET NO.

3/1/2010 1:32:05 PM T:\13259B Calif High Speed Rail\CADD\Directive Drawings\2.1.3 - Turnouts\working\2.1.3 - Interlock\_B.dgn



HOUSING WITHIN SITES

**NOTES:**

1. HOUSINGS MAY BE LOCATED ON EITHER SIDE OF THE TRACK BY DESIGNER PREFERENCE EXCEPT FOR HOUSINGS AT END OF PLATFORMS ADJACENT TO REFUGE TRACK. WPC HOUSING SHOULD BE LOCATED ADJACENT TO SIGNAL HOUSING.
2. COMMUNICATION EQUIPMENT NEEDED FOR SIGNALING WILL BE LOCATED WITHIN THE SIGNAL HOUSING.
3. WPC - WAYSIDE POWER CONTROL CABINET WILL HOUSE RTU (REMOTE TERMINAL UNIT) AND DC POWER SUPPLY UNIT FOR MOTOR OPERATED DISCONNECT SWITCHES.
4. VEHICLE ACCESS TO ALL HOUSING VIA ACCESS ROADS @ 20 FOOT WIDE (MIN).
5. ALL FACILITIES WITHIN INTRUSION PROTECTED FENCE.
6. STAIR ACCESS TO/FROM AERIAL GUIDEWAY AND HOUSES. GUIDEWAY ACCESS CAN BE COMBINED WITHIN 1000 FEET.

REV	DATE	BY	CHK	APP	DESCRIPTION

DESIGNED BY  
H. GLICKENSTEIN  
DRAWN BY  
D. SOLTERO  
CHECKED BY  
R. SCHEDES  
IN CHARGE  
K. JONG  
DATE  
02-25-10



**CALIFORNIA HIGH-SPEED TRAIN PROJECT**

TYPICAL INTERLOCKING SCHEMATIC  
ELEMENTS IN SITE FOOTPRINT

CONTRACT NO.  
DRAWING NO.  
TM 2.1.3-INTERLOCK B  
SCALE  
NO SCALE  
SHEET NO.